



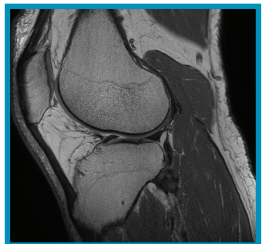
Fast Scans, **Clear Results**

Our **3.0T MR imaging services** dramatically improve clinical performance levels through innovative applications that better visualize the body.

Your Specialty Patients

3.0T MR imaging best suits the following specialty patients:

- Urology
- Oncology
- Orthopedic
- Spine
- Neurology
- Gynecology
- Bariatric
- Ear Nose & Throat



**Versatile and adaptable,
built with patients in mind**



Fast Scans, Clear Results

Our Specialty Services

- No endorectal coil needed for quality prostate scans, with minimized biopsies
- Wide bore system handles 500-lb. capacity
- Flexible coil allows kyphotic patients to lie on their side
- SilentScan technology eases concerns for migraine patients
- Feet-first comfort options reduce anesthesia needs for claustrophobic patients



Baylor Scott & White

MEDICAL CENTER

PLANO

We produce clearer scans for clearer diagnoses while improving patients' personal imaging experiences.

Fax physician orders to 469.814.2126.